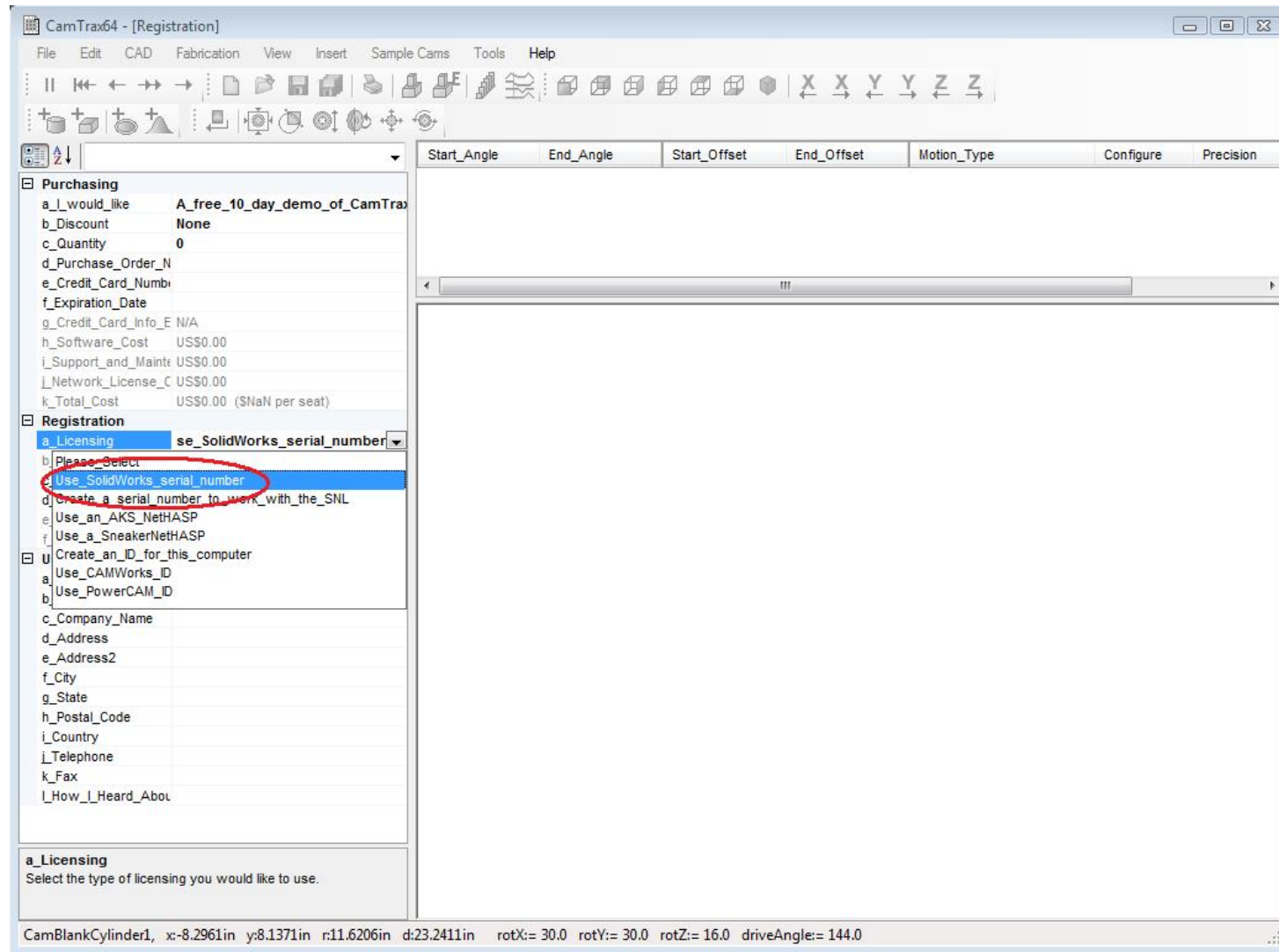


# CamTrax64 Quick Start Guide



Set CamTrax64 to use the SolidWorks serial number

CamTrax64 - [Registration]

File Edit CAD Fabrication View Insert Sample Cams Tools Help

Start\_Angle End\_Angle Start\_Offset End\_Offset Motion\_Type Configure Precision

**Purchasing**

a\_I\_would\_like A\_free\_10\_day\_demo\_of\_CamTrax

b\_Discount None

c\_Quantity 0

d\_Purchase\_Order\_N

e\_Credit\_Card\_Numb

f\_Expiration\_Date

g\_Credit\_Card\_Info\_E N/A

h\_Software\_Cost US\$0.00

i\_Support\_and\_Maint US\$0.00

j\_Network\_License\_C US\$0.00

k\_Total\_Cost US\$0.00 (\$NaN per seat)

**Registration**

a\_Licensing Use\_SolidWorks\_serial\_number

b\_Serial\_Number

c\_Registration\_Code XXXX XXXX XXXX XXXX

d\_Licence\_Accepted False

e\_OK\_to\_Run False

f\_Days\_left The license agreement has not been ac

**User\_Information**

a\_User\_Name

b\_Email

c\_Company\_Name

d\_Address

e\_Address2

f\_City

g\_State

h\_Postal\_Code

i\_Country

j\_Telephone

k\_Fax

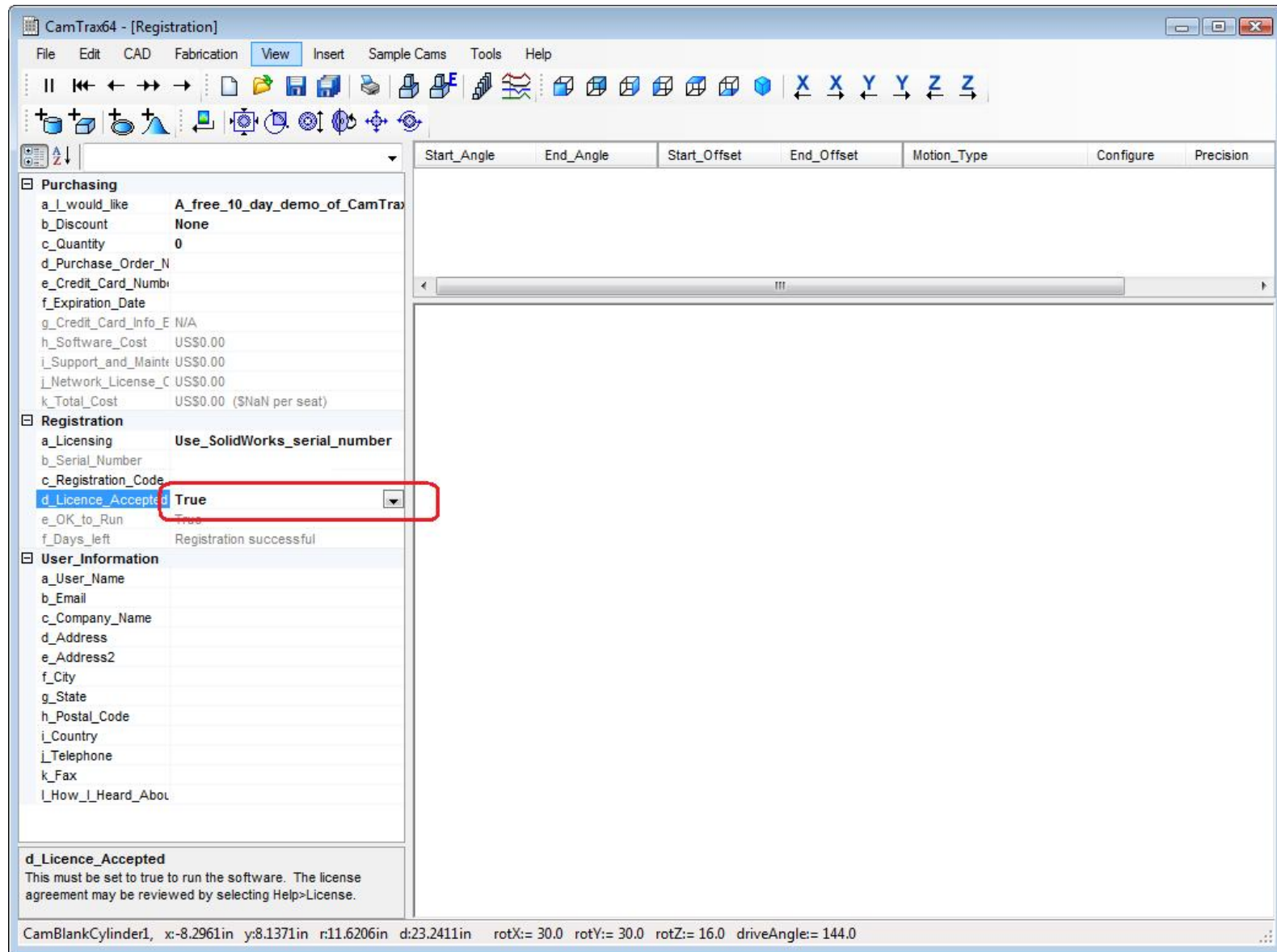
l\_How\_I\_Heard\_Abou

**c\_Registration\_Code**

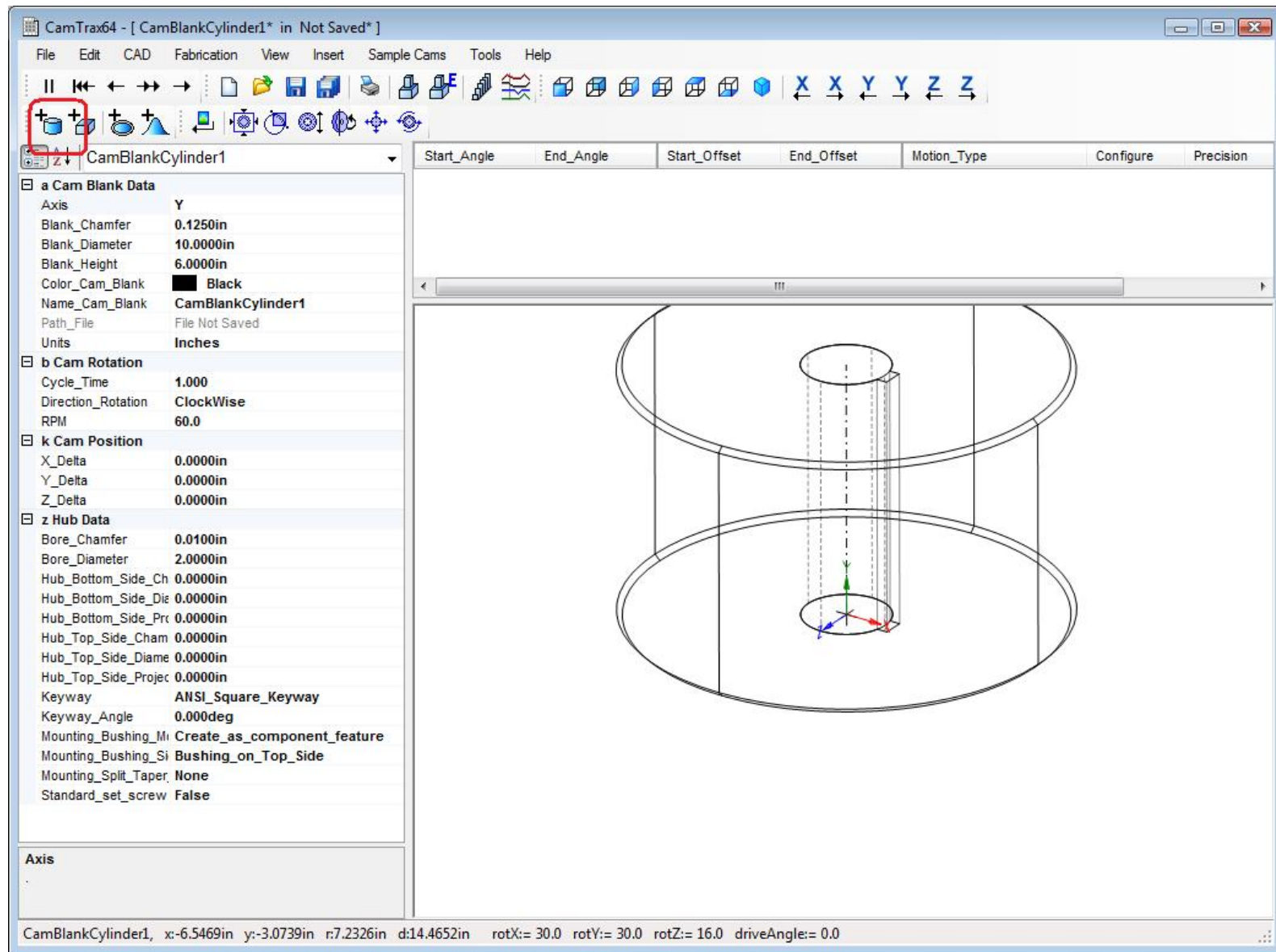
Enter the registration code provided by Camnetics, Inc. Please save this registration code for the next time you install the so...

CamBlankCylinder1, x:-8.2961in y:8.1371in r:11.6206in d:23.2411in rotX:= 30.0 rotY:= 30.0 rotZ:= 16.0 driveAngle:= 144.0

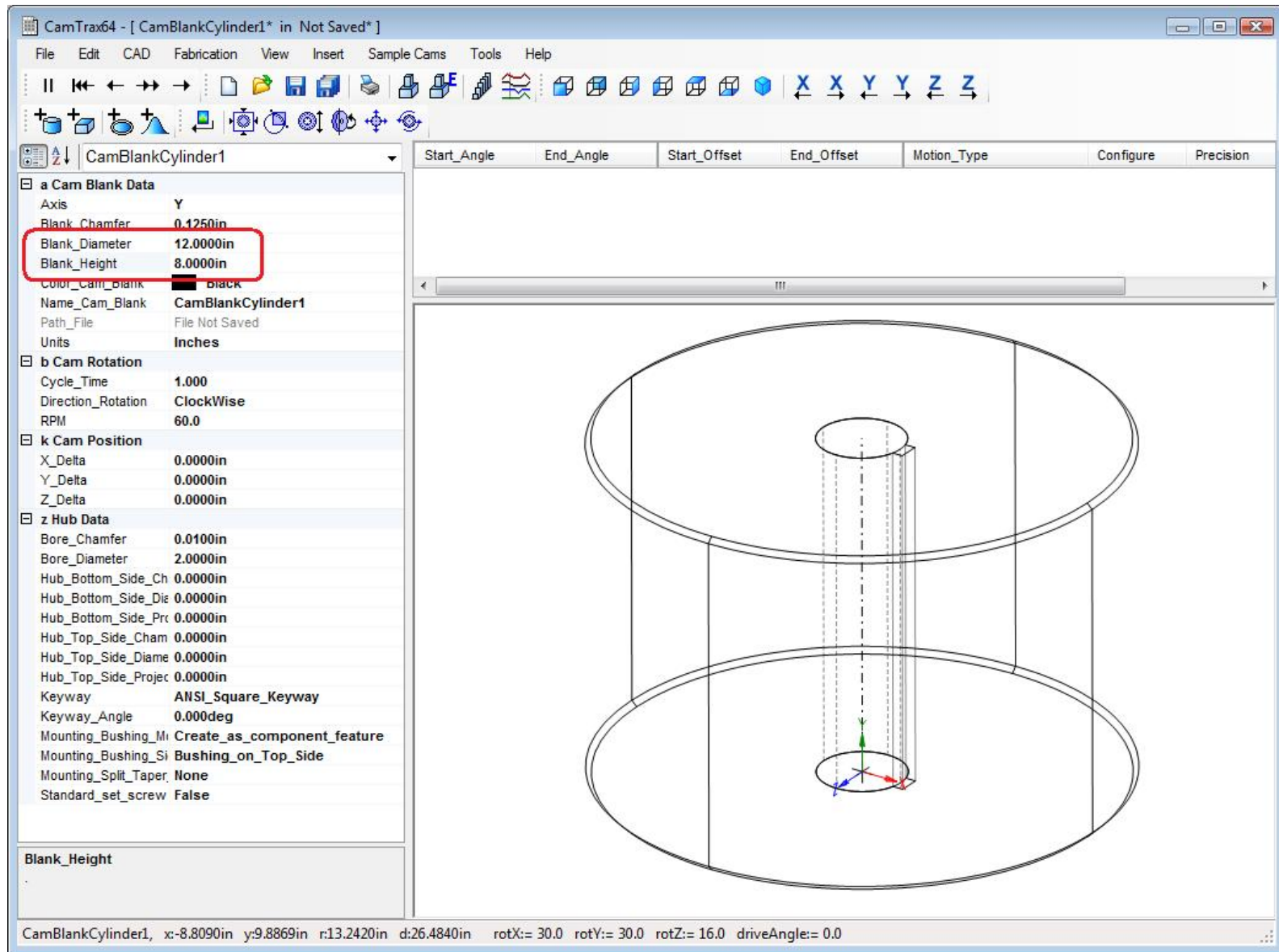
Enter the registration code provided by Camnetics, Inc.



Accept the license agreement

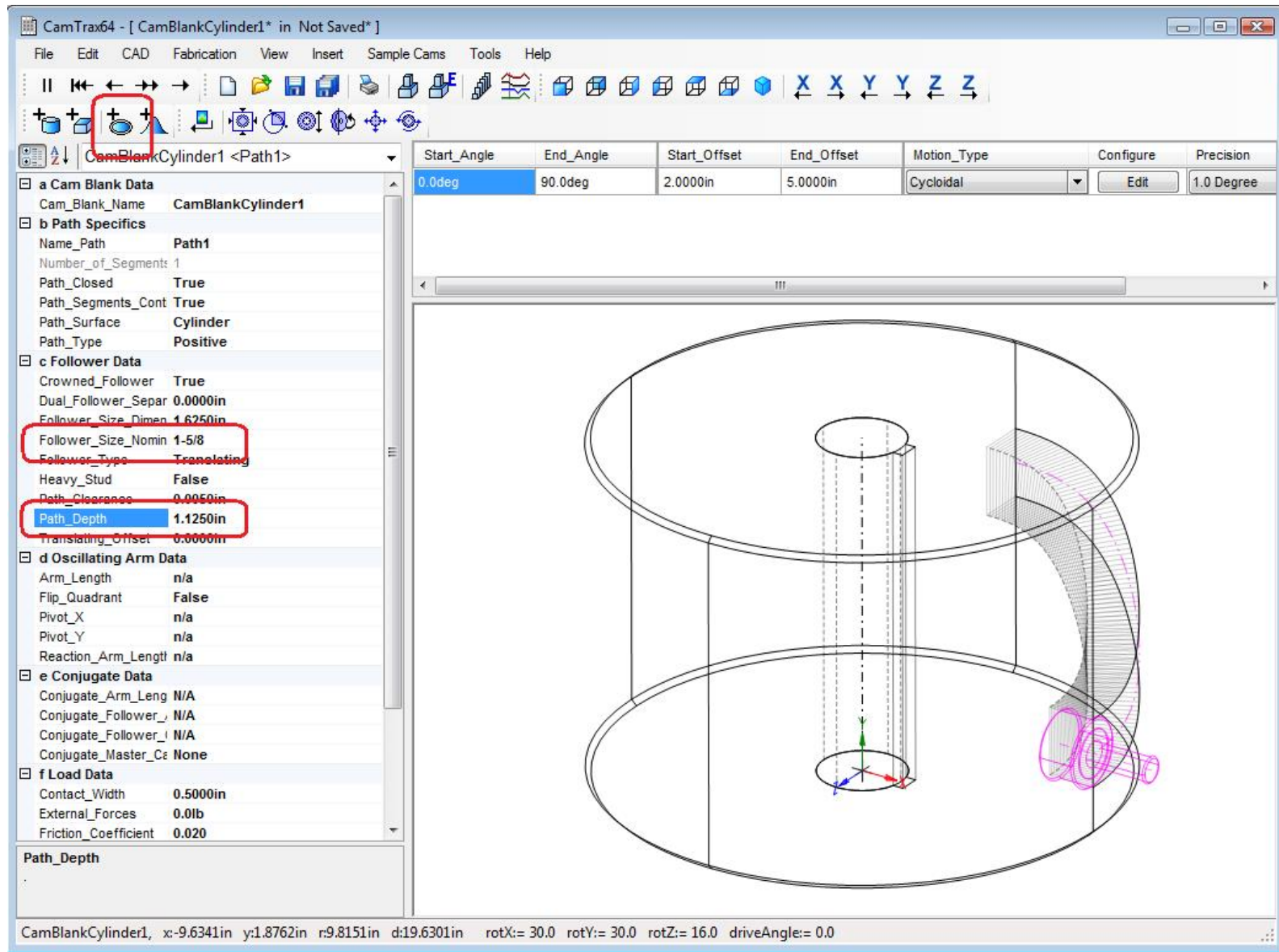


Add a cam blank by clicking on the **Add New Cylinder to Assembly** tool bar button

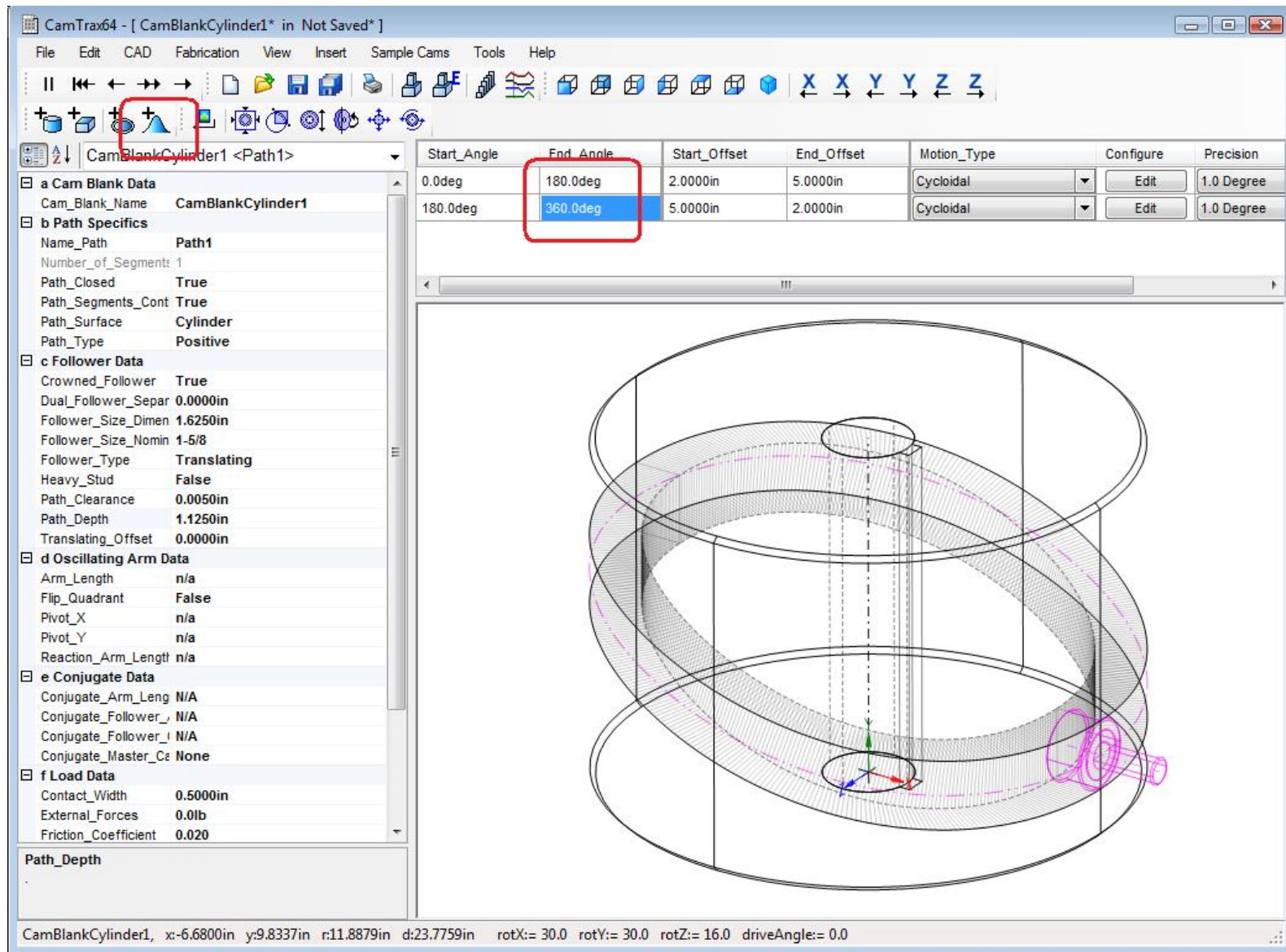


Change the **Blank Diameter** and **Height**

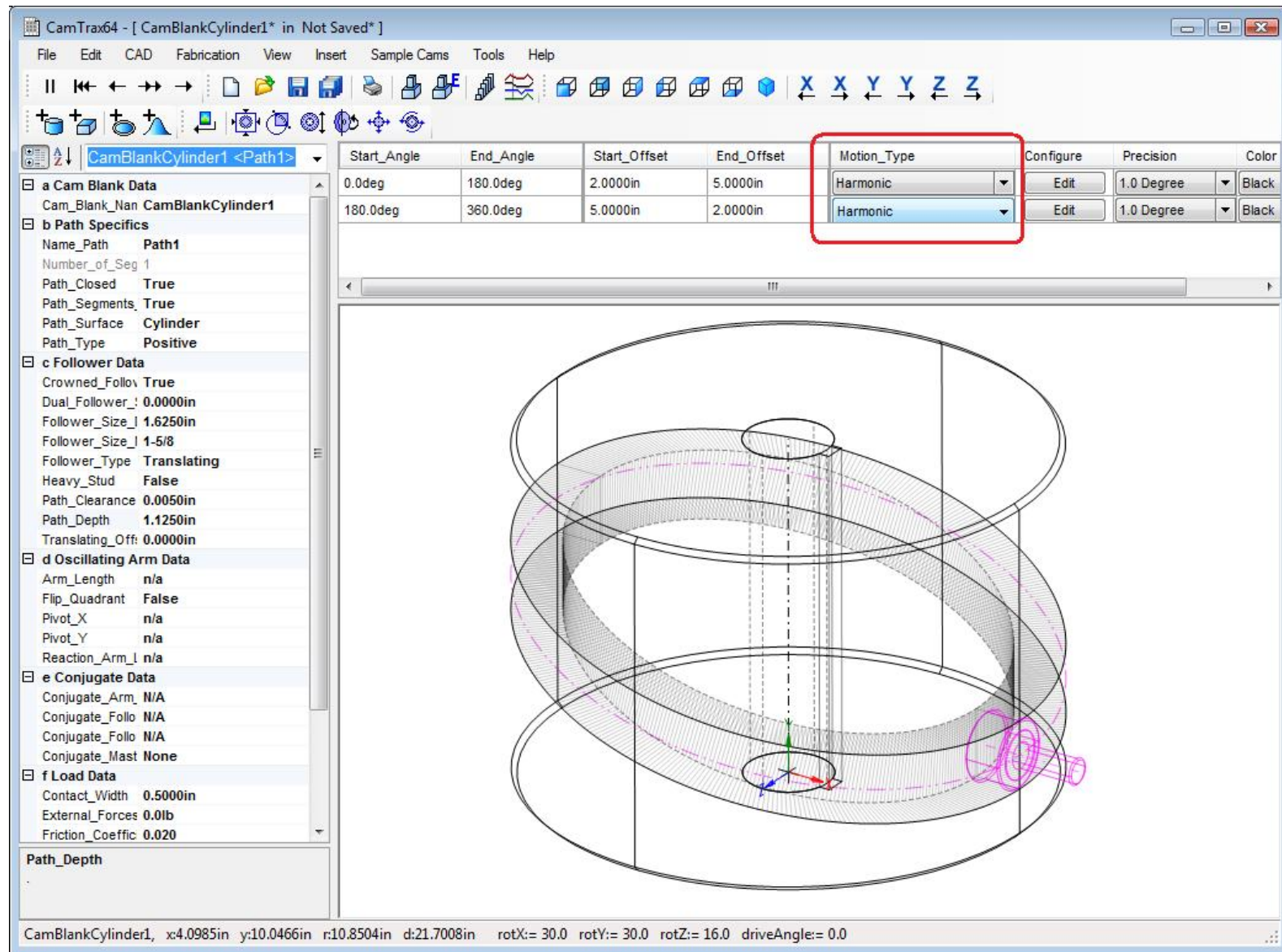




Add a path to the cam blank by clicking on the **Insert New Path** tool bar button  
 Change the **Follower Size Nominal** to 1-5/8 diameter  
 Change the **Path Depth** to 1.125

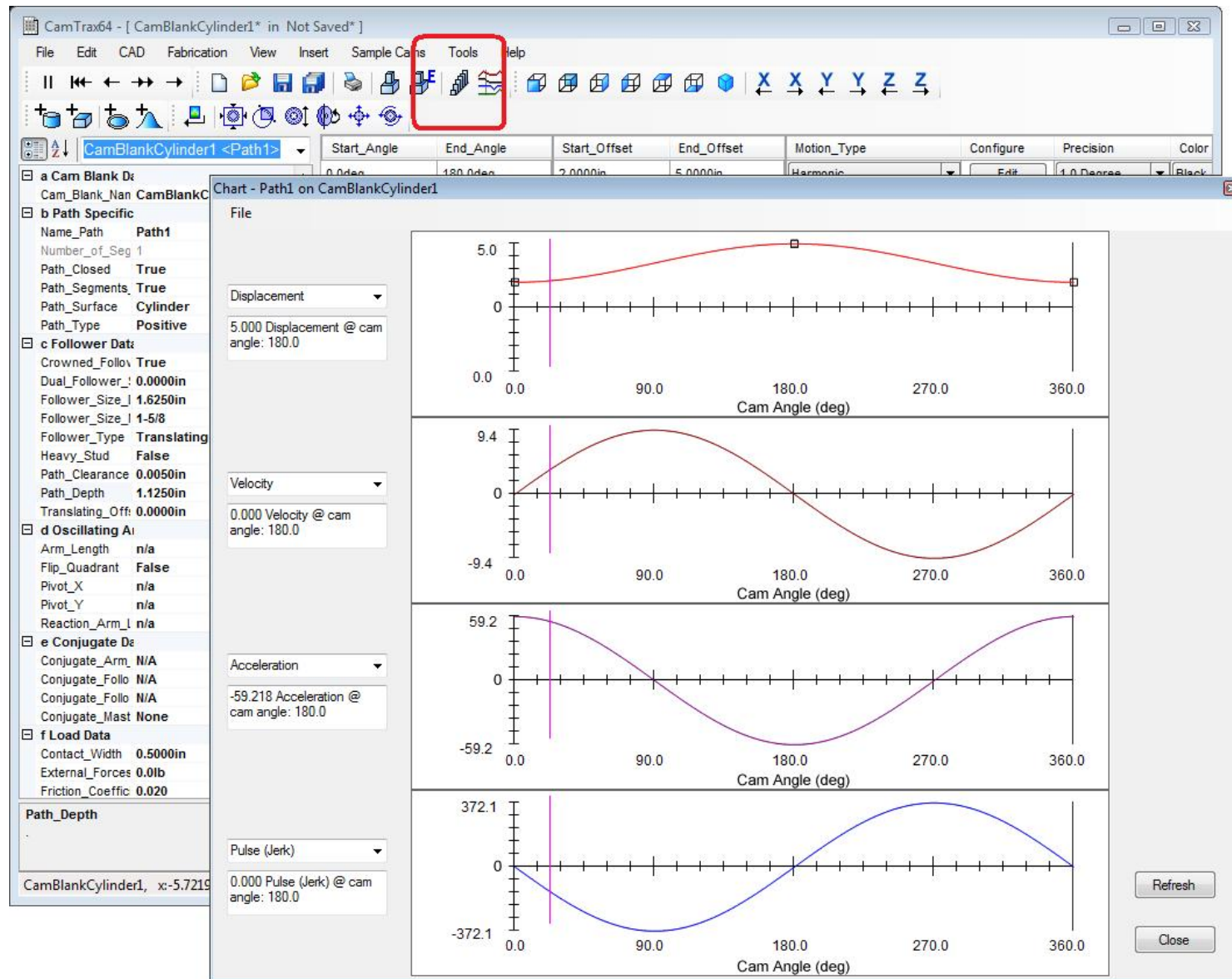


Add a segment to the cam path by clicking on the **Add Segment to Current Path** tool bar button  
 Change the end angles to 180 and 360 degrees respectively

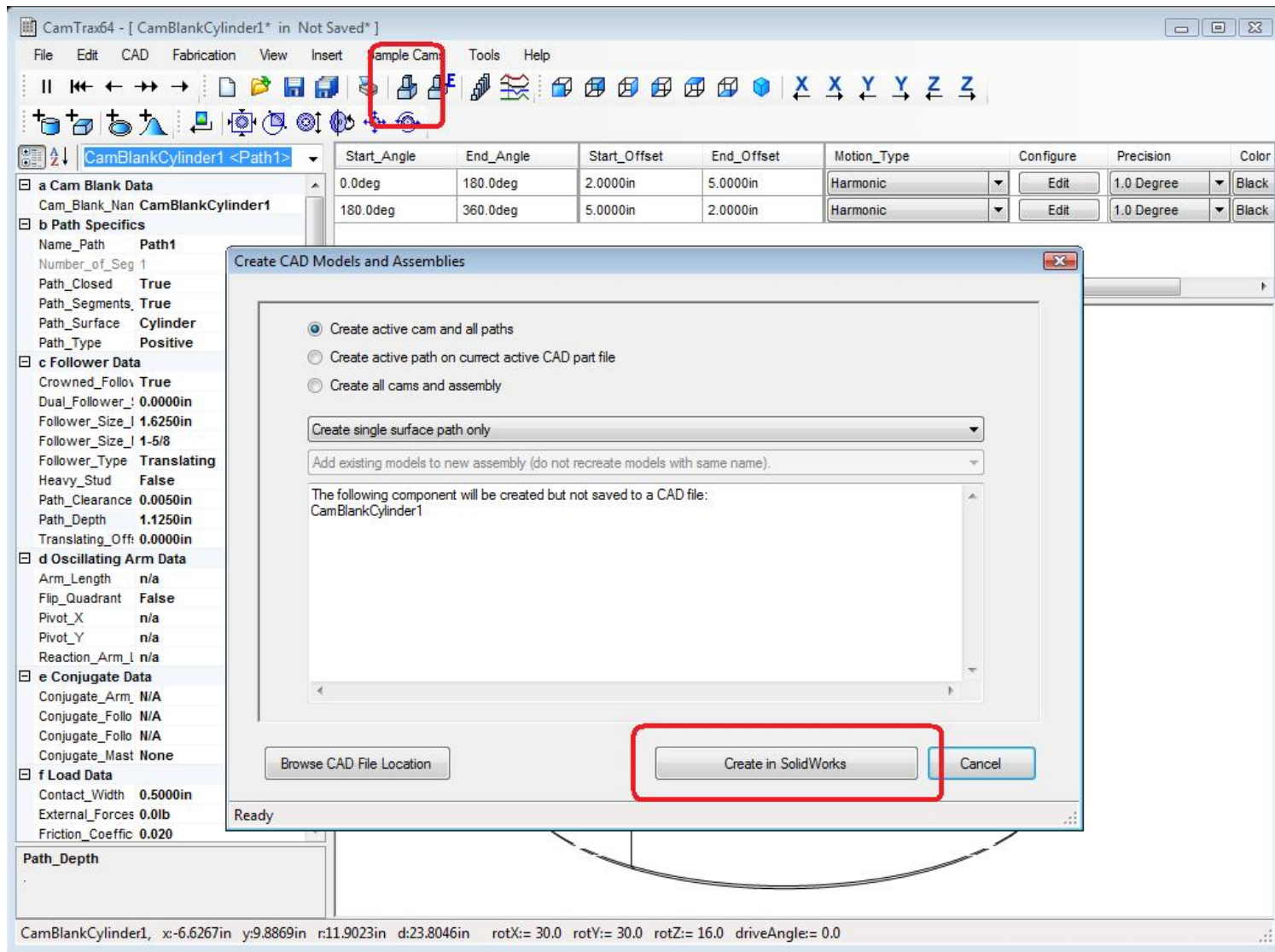


Change the motion types to **Harmonic** for both segments

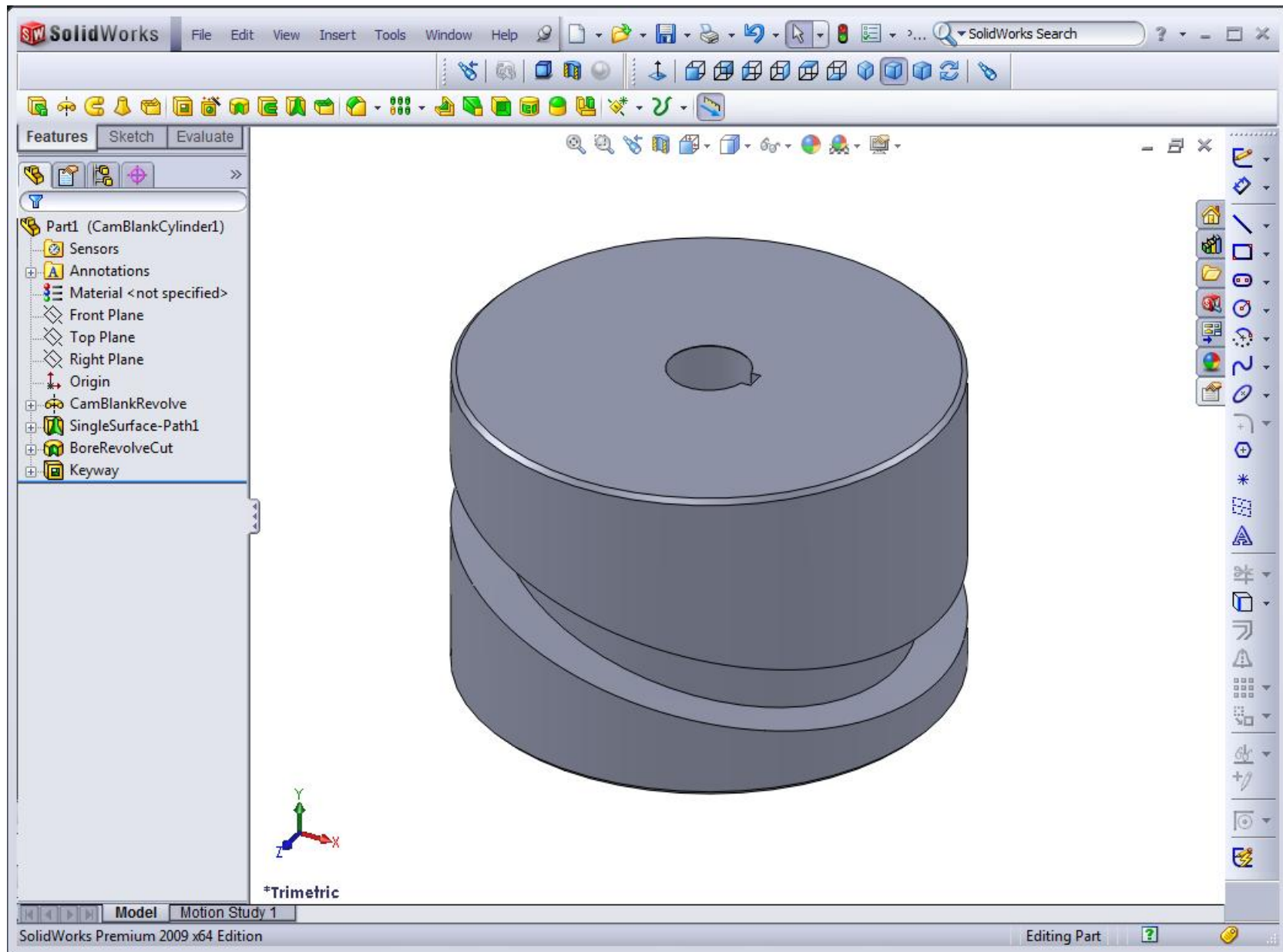




Open the Chart window by clicking on the **Open Chart Window** tool bar button



Open the **Create CAD Models and Assemblies** by clicking on the tool bar button or the **CAD>Create CAD Models and Assemblies** menu item  
 Keep the default settings and press the **Create in SolidWorks** button to create the CAD model



The completed CAD model in SolidWorks